

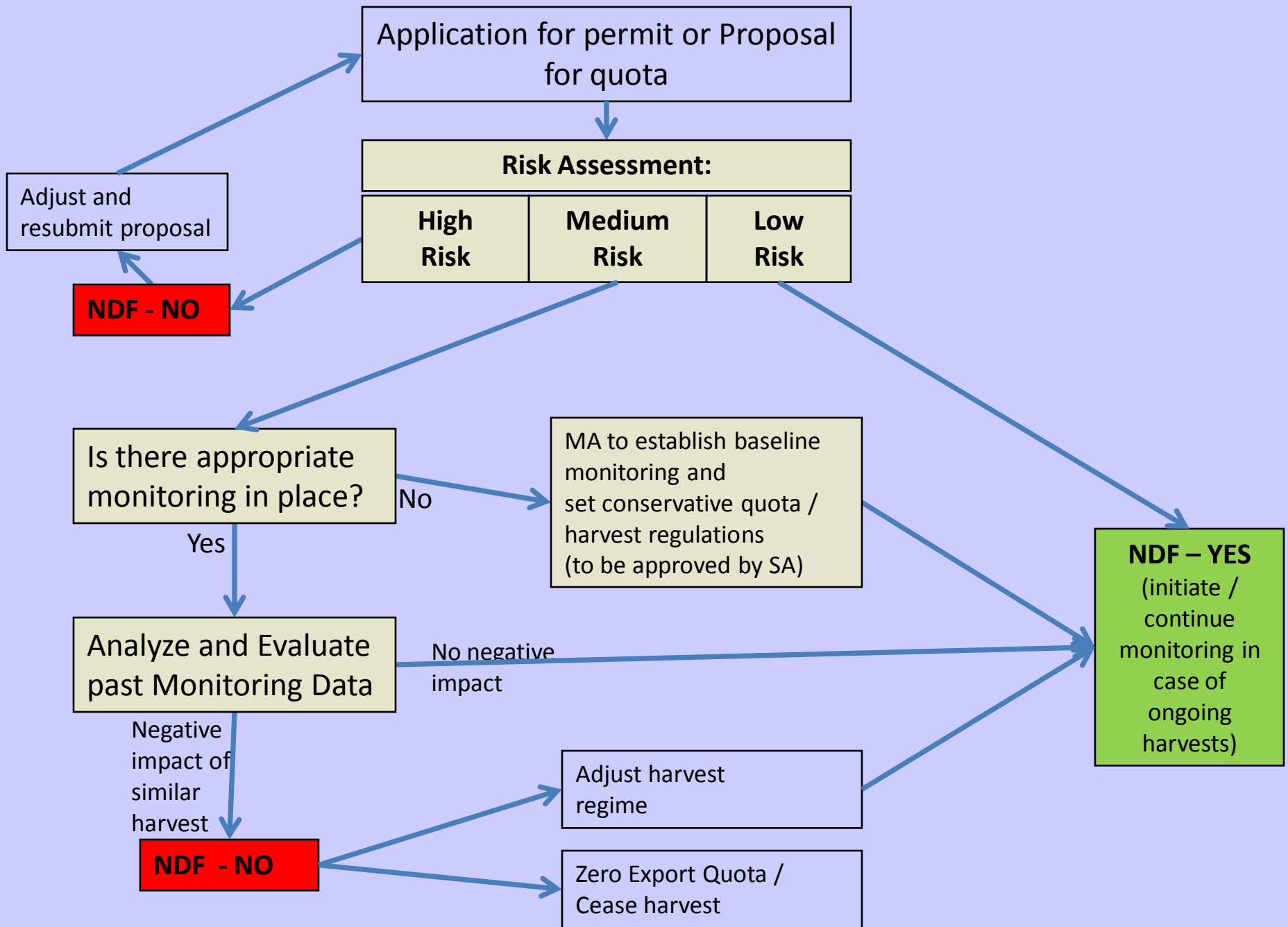


## Working Group 7 Reptiles and Amphibians



# Proposed harvest subject to NDF:

- Ad-hoc once-off permit applications
- Annual quota setting
- Ranching systems  
subject to Res Conf 11.16 :  
NDF is represented by acceptance of proposal  
by CoP and monitored by reporting  
requirements



# Risk Assessment of proposed harvest

## Intrinsic vulnerability of species [population]

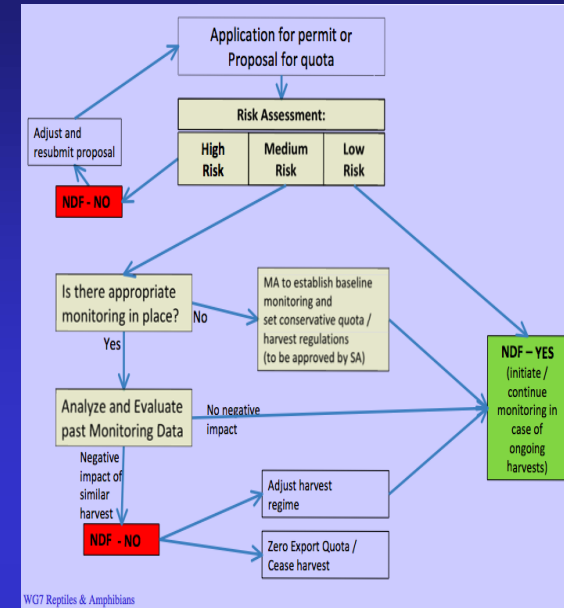
- Distribution, dispersal
- Population size / density
- Reproductive capacity
- Niche width
- Role in Ecosystem

## General Threats acting on population

- Illegal trade
- Invasives, diseases, etc.
- Human-induced impacts (habitat loss, pollution)
- Domestic use

## Potential Impact of Proposed Harvest

- Quantity or proportion of population
- Life stage targeted
- Harvest method
- Harvest purpose
- Harvest area
- Effectiveness of regulation and management



WG7 Reptiles & Amphibians

Broad categorization as Low, Medium, or High Risk

PRE-NDF RISK SCORE			<i>Croc.</i>	<i>Cuora</i>	<i>U.or.</i>	<i>U. aeg.</i>	<i>Ptyas</i>	<i>Mala.</i>	<i>Rana</i>	MI	MA
										N	X
<b>1. Intrinsic vulnerability of the species</b>		<b>Low =1, High = 5</b>	2	2.5	5	4	1	5	1	1	5
Weight		Distribution, dispersal									
2		Population size / density									
		Reproductive capacity									
		Niche width									
<b>2. General threats on the population</b>		<b>Low =1, High = 5</b>	2.5	4	3	4	3	4	2.5	1	5
Weight		Illegal trade									
1		Invasives, diseases, etc.									
		Human-induced impacts (habitat loss, pollution)									
		Domestic use									
<b>3. Potential impact of proposed harvest</b>		<b>Low =1, High = 5</b>	1.5	4	5	3	4	4	3.5	1	5
Weight		Quantity or proportion of population									
2		Life stage targeted									
		Harvest method									
		Harvest purpose									
		Harvest area									
		Effectiveness of regulation and management									
<b>Weighted "Pre-NDF Risk Score"</b>			1.9	3.4	4.6	3.6	2.6	4.4	2.3	1.0	5.0
			Low	Med	High	High	Med	High	Med	Low	High

Pts.: 5.0 25.0

0		
2	<b>0 - 2.0</b>	<b>Low</b>
3.5	<b>2.1 - 3.5</b>	<b>Med</b>
5	<b>3.6 - 5.0</b>	<b>High</b>

## Low risk of proposed harvest event

Examples: Ad hoc 'small' one-off exports  
Annual small harvest of 'disposable' life

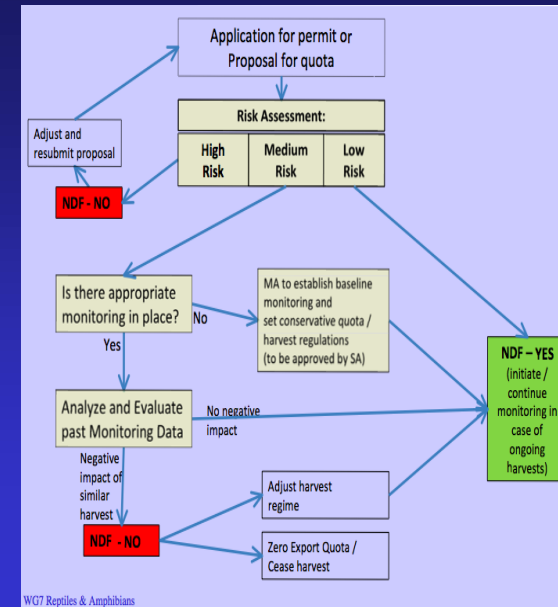
stage

Likely positive NDF:

Document the data used to arrive at evaluation as 'low risk'

Implement 'casual' monitoring program:

- Monitor permits vs. actual take & accumulation of permits
- Implement 'low-key' harvest impact monitoring program



# High risk of proposed harvest event

Examples: high quantity of rare threatened species

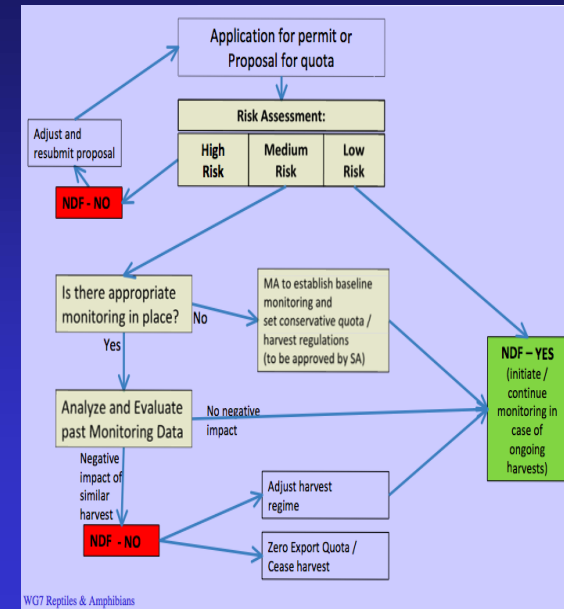
large annual quota of

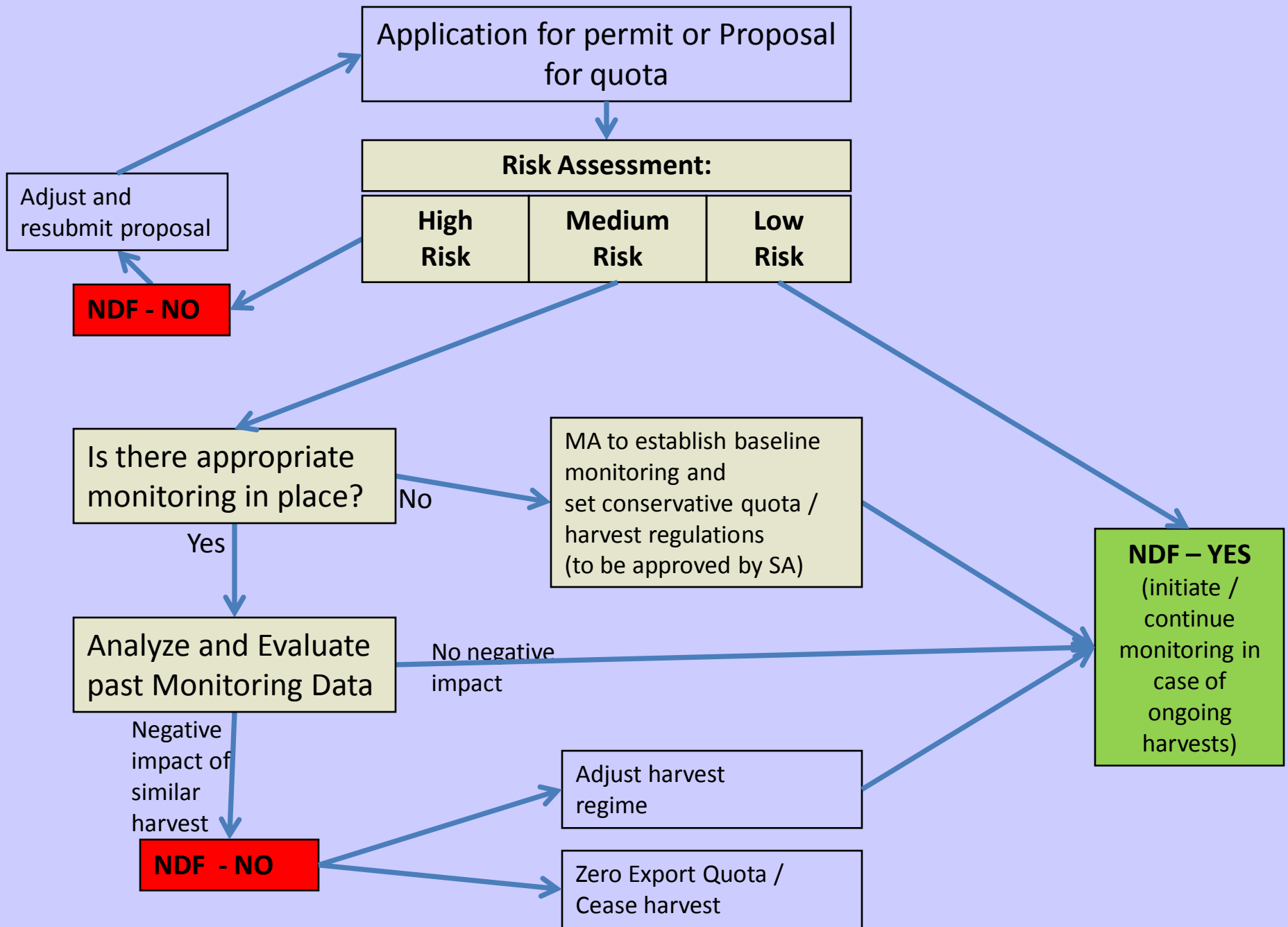
adults of vulnerable species

## Reject application

Encourage actions to address the factors that caused evaluation as 'high risk'

- Other threats
- Adjust proposed harvest







Is there appropriate monitoring in place?

Yes

No

**Analyse and evaluate:**  
**Field data**  
•Changes in density, distribution, demography  
**Harvest Data**  
•Location  
•Amount (numbers or weight)  
•Harvest method  
•Juvenile vs adult  
•Sex  
•Permits vs export and take

Establish baseline monitoring and Set conservative quota/ harvest regulations (to be approved by SA)

No negative impact

NDF – YES (continue monitoring in the case of ongoing harvests)

Negative impact

NDF - NO

Zero Export Quota/  
Cease harvest

**Adjust harvest regime**  
•Reduction of quota  
•Minimum size  
•No take areas  
•Season closures, rotation of harvest areas  
•Revise methods of harvest  
•Sex- Size-age restriction  
•Address illegal harvest and other threats  
•Conservation measures / augmentation – (supported by proponent)